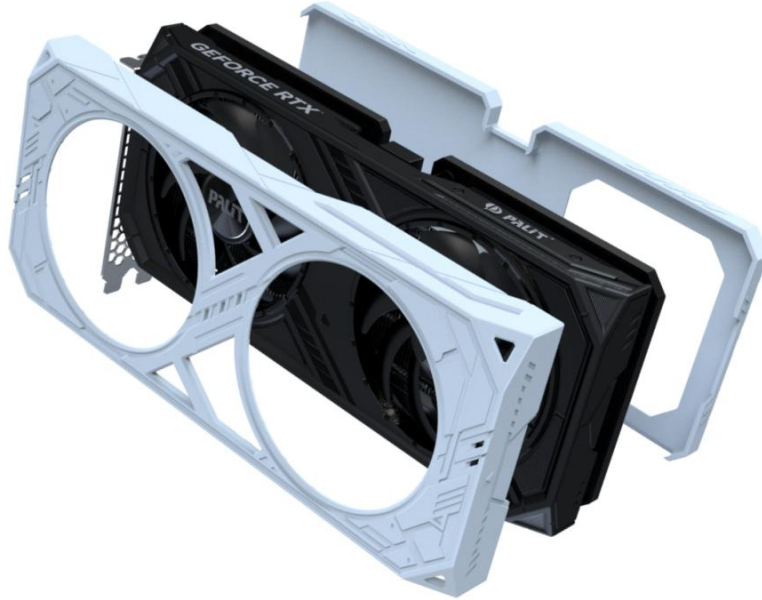




Add Your Custom Design to Palit RTX 40 Dual - SOP



Read through the [SOP](#) carefully before the DIY process.

1. Attach the cover from the north side first, and then gently press the other three sides. When hearing a “click” sound, it means the cover is fixed.
2. Follow the same instruction to install the backplate.

Notes

- Palit provides two versions of 3D files.
 - ✓ **Creator Version:** For 3D editing masters. The file offers a plain cover without any pre-design on it. Users can take it as basement to design their own cover.
 - ✓ **Painting Version:** For general users. The file comes with pre-designed patterns. Users can simply paint the cover that fits their own style
- There is no limitation for 3D printer whether FDM, SLA or others.

Warranty

As long as creators didn't disassemble any part of the thermal or backplate, it won't break warranty.

Users need to remove the customized design and revert it back to the original condition of the graphics card if apply for RMA.